

From: [Norman, Kate](#)
To: [Michael Thabault](#); [Nicole Alt](#)
Subject: Re: GRSG 2015: FOR MIKE, State Webinar Materials (2/24/2015)
Date: Monday, February 23, 2015 4:25:06 PM
Attachments: [20150224_GRSGstateWebinar_Presentation.pptx](#)

FYI-

Lief informed me today that 10 (not 9) states entered projects. California entered 1 project, but was not previously included in the tally.

I updated the CED slide to reflect this change.

Thanks,
K

On Mon, Feb 23, 2015 at 3:20 PM, Norman, Kate <kate_norman@fws.gov> wrote:
Hey Mike-

In preparation for tomorrow, I wanted to make sure you had the latest and greatest and a plethora of support materials. This is all posted to the SharePoint portal under the 02/24 meeting (<https://portal.doi.net/usfws/SG/docs/Forms/0224.aspx>) and attached here for reference.

I've included:

- 1- Updated Agenda
- 2- Director's Talking Points (same as what I sent Noreen)
- 3- Revised Presentation (same as what I sent Noreen)
- 4- Support Materials
 - *Strongholds Memo
 - *Strongholds Talking Points
 - *Grazing Memo
 - *Grazing Memo QandAs

If you have any questions or need anything further, please let me know!

Thanks,
K

--

Kate Norman, Sage-Grouse Project Manager
U.S. Fish and Wildlife Service, Region 6
134 Union Blvd, Lakewood CO 80228
PO Box 25486, DFC, Mailstop 60120, Denver CO 80225
Office: 303-236-4214
Mobile: 703-927-2445
kate_norman@fws.gov

--

Kate Norman, Sage-Grouse Project Manager
U.S. Fish and Wildlife Service, Region 6
134 Union Blvd, Lakewood CO 80228
PO Box 25486, DFC, Mailstop 60120, Denver CO 80225
Office: 303-236-4214
Mobile: 703-927-2445
kate_norman@fws.gov



Greater Sage-grouse Update for States

February 24, 2015

Goals for Today

- **Species Report Progress**
 - Disease
 - Recreation
- **Conservation Efforts Database (CED)**
- **Fire**
- **Additional Updates**
 - Media Schedule (IJNR)
 - Grazing Memo
 - Stronghold Memo



Conversation: Conservation now and in the future

Species Report: Disease - West Nile Virus

- In 2010, we concluded that disease was not a significant threat to the species
- Non-native, mosquito-borne pathogen
- Occurs throughout range of sage-grouse
- Occurrence influenced by temperature, mosquito breeding habitat, precipitation
- July – September transmission season
- For individuals impacted: High mortality, very low resistance
- Greatest impacts to small, isolated populations



Species Report: Recreation

- **Uses:**

- Recreational use of GRSG (Bird watching and photography)
- Recreational Activities in GRSG habitat (hiking, camping, OHV use, etc.)

- **Impacts:**

- Habitat impacts – Localized degradation and fragmentation
- Disturbance to individuals (Noise, Predation, Mortality from crushing/collision)

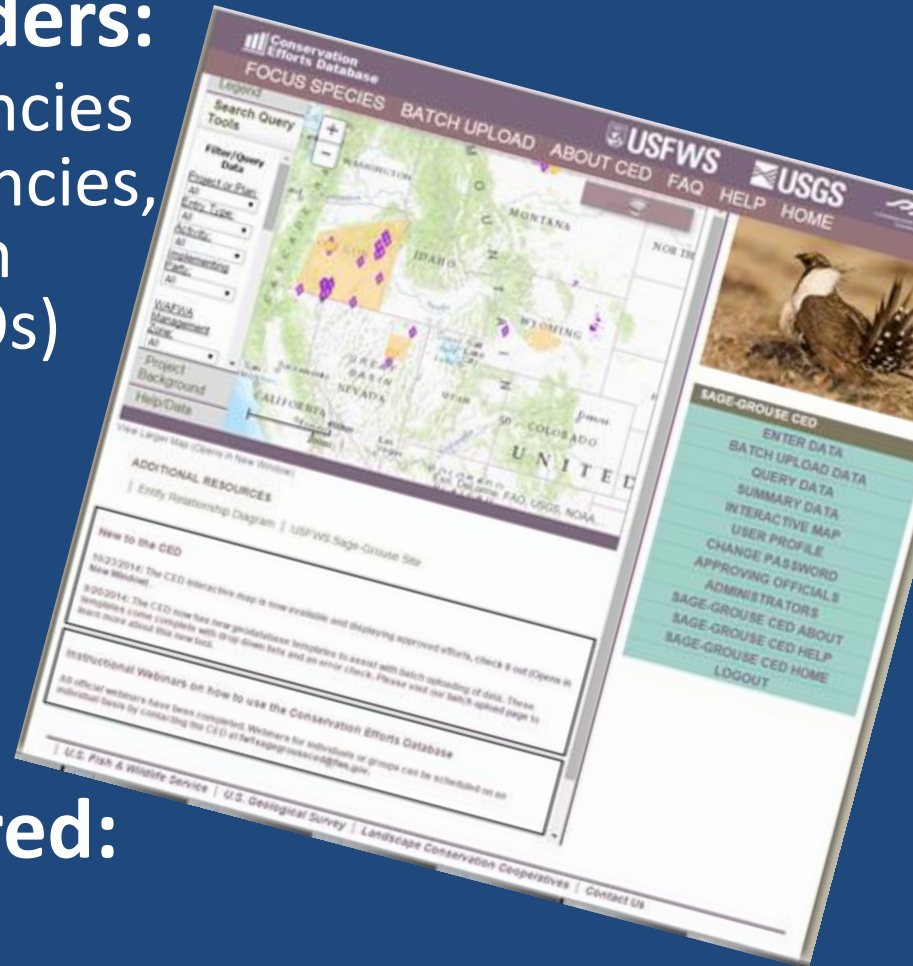


Conservation Efforts Database

- **Number of Data Providers:** 43 groups (including agencies from 10 states, federal agencies, soil and water conservation districts, industry, and NGOs)

- **Number of Projects Entered:** 6,148

- **Number of Plans Entered:** 110



Fire – SO 3336

Timeline and Deliverables:

- **2/1/2015:** Implementation Plan
 - Organizing document
- **3/1/2015:** Initial Plan – Due March 1
 - Details actions for the 2015 fire season
- **5/1/2015:** Final Plan – Due May 1
 - Details actions for the 2016 fire season and beyond



Fire – SO 3336

Forests and Rangelands

About Forests & Rangelands

Home: Rangeland Fire Prevention, Management, and Restoration

Search

Go

Forests & Rangelands Home

Wildland Fire

- Wildland Fire Leadership Council »
- Cohesive Strategy »
- Quadrennial Fire Review (QFR) »
- Wildland Fire Information and Technology (WFIT) »
- Success Stories
- Resources »
- Related Links

Forest Management

- Forest Operations Catalog »
- Stewardship Contracting
- Tools
- Woody Biomass Utilization »

Rangeland Management

- Rangeland Fire Prevention, Management, and Restoration

Rangeland Fire Prevention, Management, and Restoration



Secretarial Order Number 3336 sets in motion options...

On January 5, 2015, U. S. Department of the Interior Secretary Sally Jewell signed [Secretarial Order Number 3336, Rangeland Fire Prevention, Management, and Restoration \("Order"\)](#) (PDF, 86 KB). The Order sets in motion actions to enhance the protection, conservation, and restoration of a healthy sagebrush-steppe ecosystem, and to address important public safety, economic, cultural, and social concerns. This effort builds upon the experience and success of addressing rangeland fire and the broader wildland fire prevention, suppression and restoration efforts to date. This includes the [National Cohesive Wildland Fire Management Strategy](#) and the recent [The Next Steppe: Sage-Grouse and Rangeland Fire in the Great Basin](#) conference, and ensures improved coordination with local, state, tribal and regional efforts to address the threat of rangeland fire at a landscape-level.

Highlights

- [DRAFT February 17, 2015: SO 3336 The Initial Report A Strategic Plan for Addressing Rangeland Fire Prevention, Management, and Restoration in 2015](#) (PDF, 564 KB)
 - [Submit comments about the report online...](#)
- [The Implementation Plan, Secretarial Order 3336 - Rangeland Fire Prevention, Management, and Restoration](#) (PDF, 219 KB)
- [Frequently Asked Questions about Secretarial Order 3336](#)

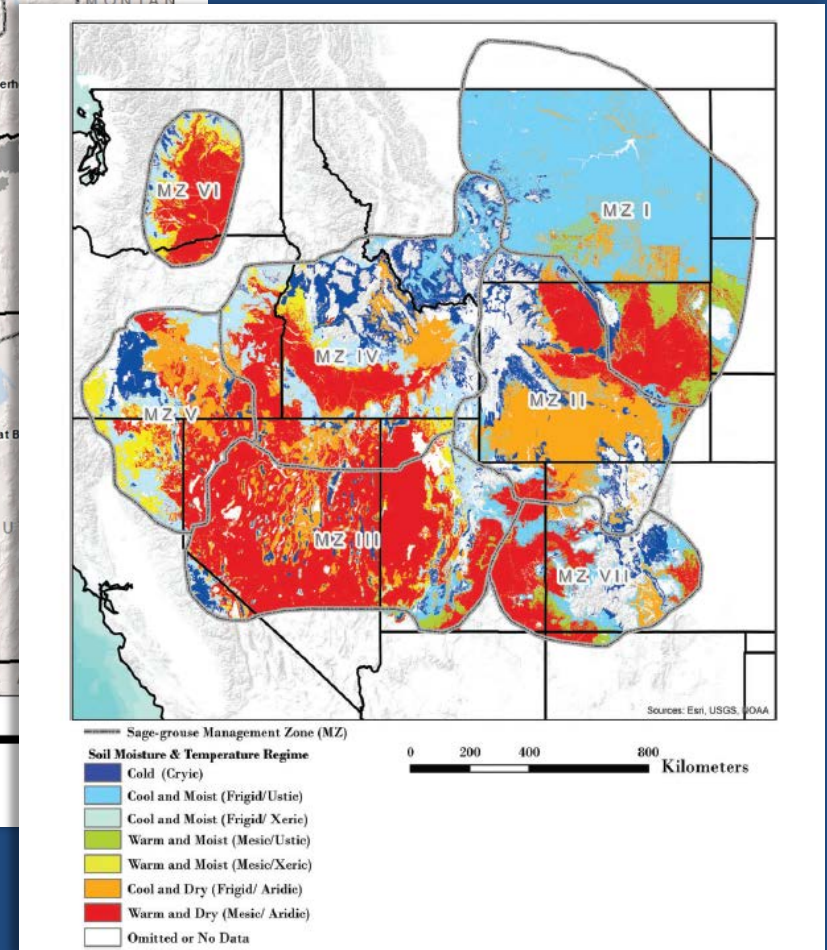
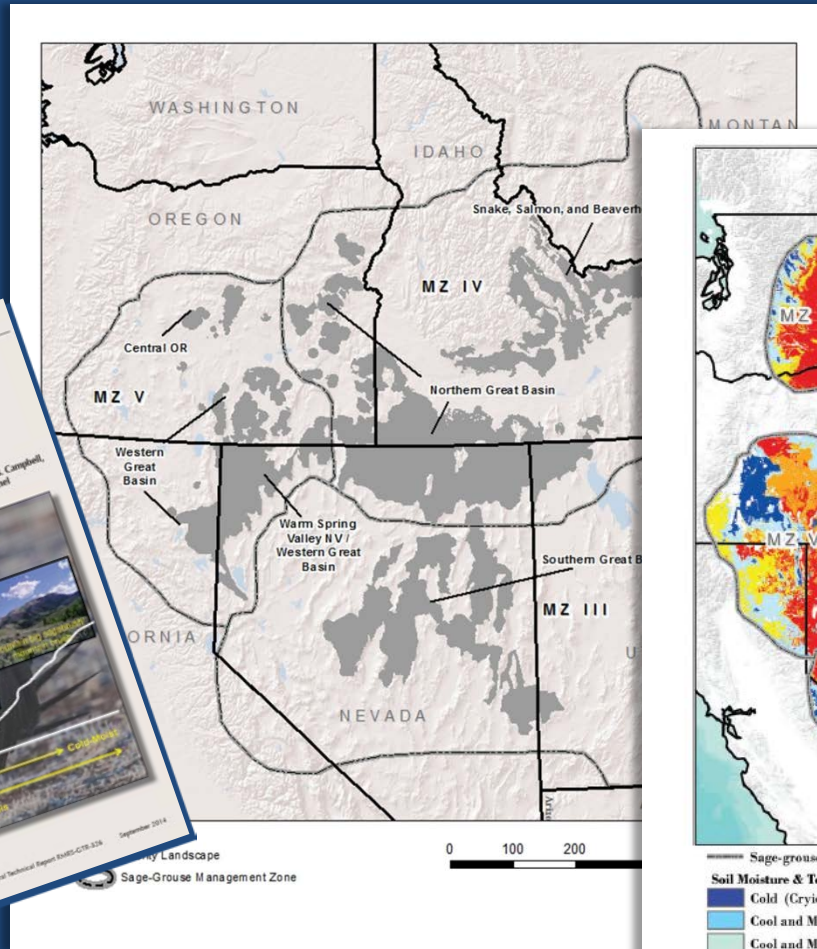
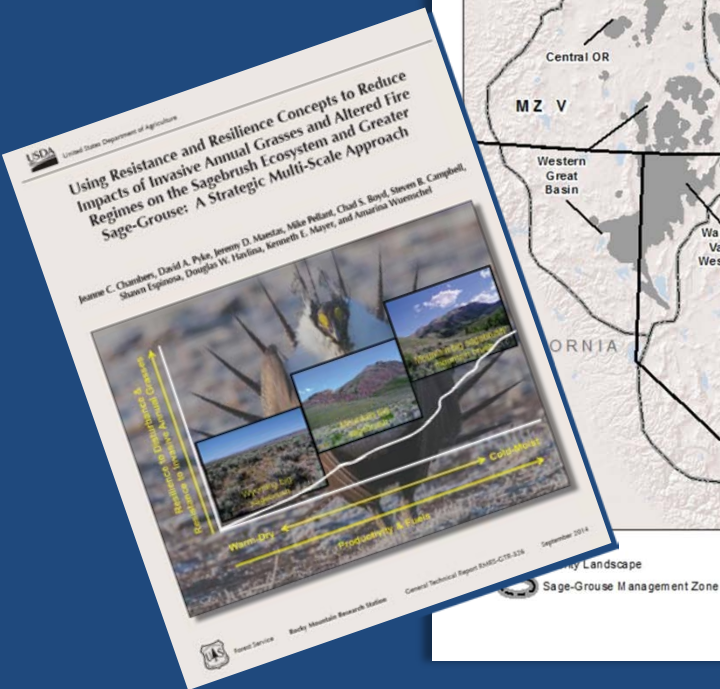
Events

- Stakeholder Outreach Listening Session:**
Friday, February 20, 2015
Time: 8:30 - 10:00 a.m. PST
Call Number: 1-877-915-2768
Passcode: 7530552#
- Tribal Consultations:**
 - February 19, 2015,

<http://www.forestsandrangelands.gov/rangeland/index.shtml>



Fire - FIAT



http://www.fs.fed.us/rm/pubs/rmrs_gtr326.pdf



Update: Sagebrush Country Institute

The USFWS supporting a field-based journalism learning expedition with Institute for Journalism and Natural Resources.

4/6: Utah

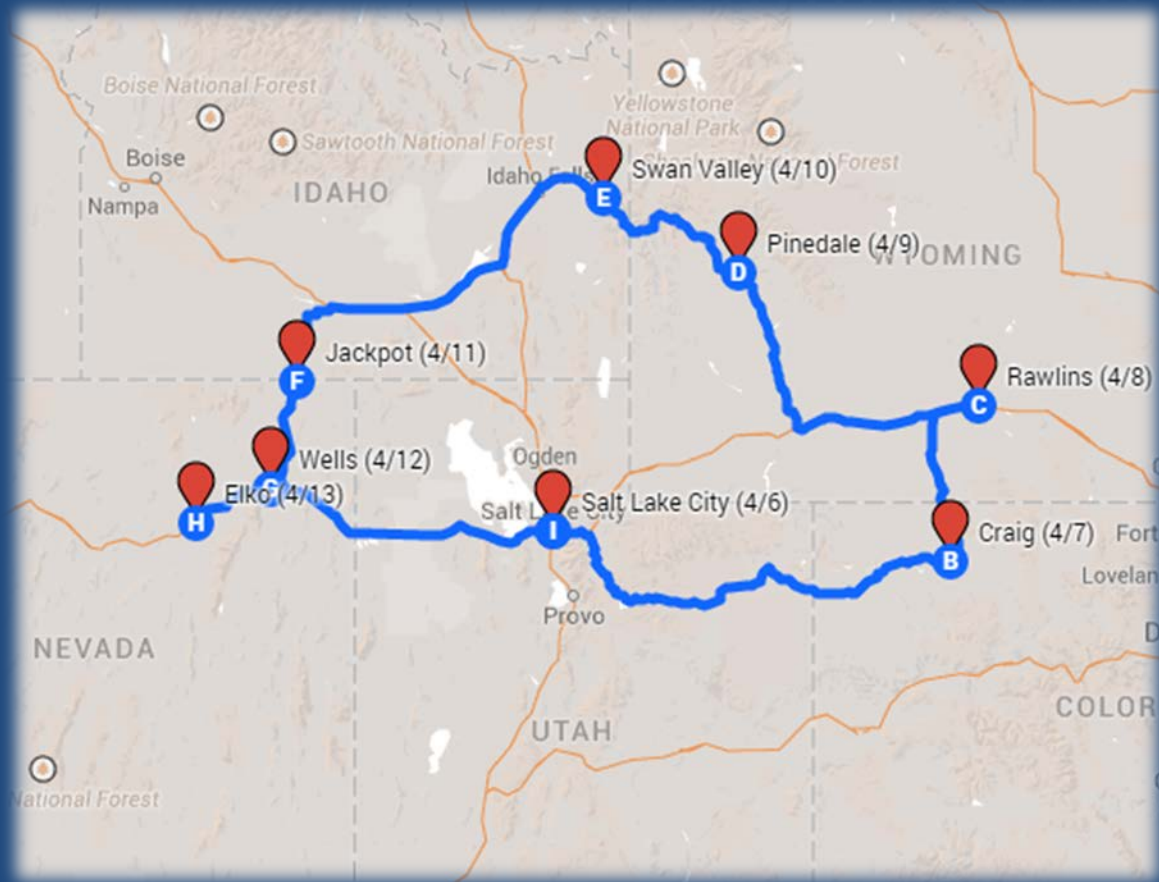
4/7: Colorado

4/8 – 4/9: Wyoming

4/10: Idaho

4/11- 4/12: Nevada

4/13: Nevada and Utah



Other Updates

Grazing and Conservation Collaboration:

The Service recently issued a memo to our personnel providing guidance on our work with rangeland owners.

Strongholds:

At their request, the Service provided to federal landowners recommendation for important areas for sage-grouse conservation.

<https://www.fws.gov/greatersagegrouse/>



Conversation: Conservation now and into the future



Questions

